



Knick
Elektronische Messgeräte
GmbH & Co. KG

Headquarters

Beuckestraße 22 • 14163 Berlin
Germany
Phone: +49 30 80191-0
Fax: +49 30 80191-200
info@knick.de
www.knick.de

Local Contacts

www.knick-international.com

Copyright 2019 • Subject to change

Version: 1

This document was created on May 20, 2019.

The latest documents are available on our website below the corresponding product description.



095987

TE-201.515-KNE01



Installation Guide
English

Protos II 4400(X)
Replacement of FRONT Module



Read before installation.
Keep for future use.

www.knick.de



These instructions describe how to replace the FRONT module (4400 C/S-011, 4400X C/S-015) in Protos series devices.

Safety Instructions

Check all components for damage upon receipt. Do not use damaged parts.

The module may only be replaced by personnel authorized by the operating company and specially trained to handle the product.

Disconnect the power supply before replacing the FRONT module. Never mix Ex and non-Ex components.


Protos II FRONT 4400X C/S-015: When working in a hazardous location, observe all applicable local and national codes and standards for the installation of electrical equipment in explosive atmospheres.

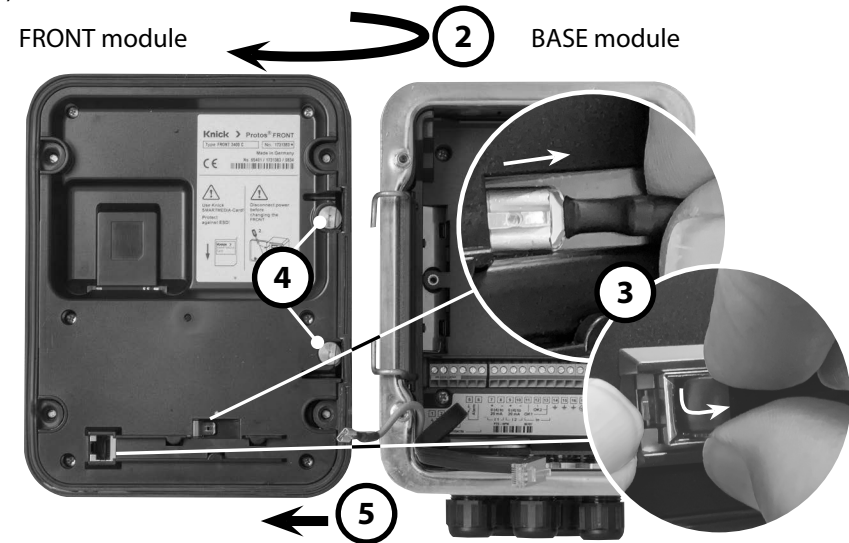
See the information in the Safety Guide for Protos II 4400(X).

Tools (not included in the package): Phillips screwdriver (PZ2), slotted screwdriver with 1/4" (6 mm) blade width




Disassembly

1. To open the device, remove the 4 captive screws .
2. Open the FRONT module toward the left.
3. Pull off the power supply line (unlock the RJ45 connector) and the protective conductor.
4. Rotate the retaining screws of the pivoting hinge 90° counterclockwise.
5. Remove the FRONT module from the BASE module.



Assembly

6. Place the new FRONT module onto the pivoting hinge of the BASE module.
7. Rotate the retaining screw of the pivoting hinge 90° clockwise.
8. Connect the power supply line (RJ45 connector) and the protective conductor. Push in both connectors until they snap in.
9. Check if the circumferential sealing is correctly seated, undamaged, and clean.
10. Close the FRONT module toward the right.
11. Tighten the 4 captive screws .
12. After ensuring that the device has been assembled correctly, switch the power supply back on.

