

# Pneumatic Retractable Fittings

Chem

Energy

Pharm

Food

Water

## Accessories for Ceramat®

### Accessories

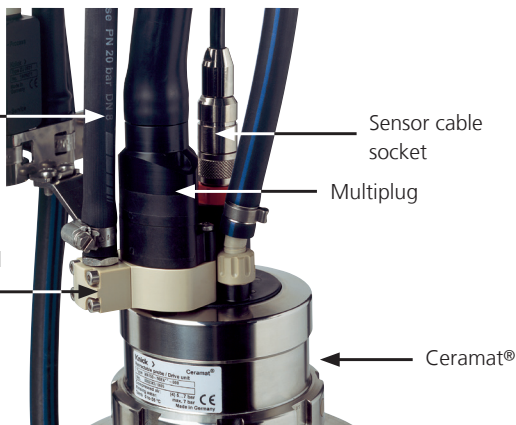
Order No.

Adapter for additional medium

Application:

Inlet for  
cleaning media or  
superheated steam

Adapter for additional  
media (installed  
between multiplug  
and Ceramat®)

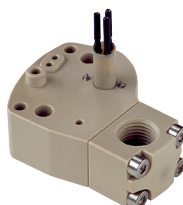


Adapter for introducing additional media, e.g. hot water or steam,  
directly at the retractable fitting

Material: stainless steel, 1.4571  
Pressure: max. 8 bars  
Temperature: max. 125 °C (10 min 140 °C)  
Media connection: internal G 1/4" thread  
incl. 1/4" connection nipple for DN 8 hose  
incl. EPDM DN 8 media pressure hose, reinforced, 5 m  
incl. integrated check valves  
incl. long limit switch cap  
Gaskets: FKM  
EPDM  
FFKM  
Assembly: screwed to multiplug at the fitting  
Fittings: Ceramat® WA 150, Ceramat® WA 160

**ZU 0655**

**ZU 0655/1  
ZU 0655/2  
ZU 0655/3**



Adapter for introducing additional media, e.g. hot water, steam, or cleaning  
agent directly at the retractable fitting

Material: PEEK  
Pressure: max. 8 bars  
Temperature: max. 125 °C (10 min 140 °C)  
Media connection: internal G 1/4" thread  
incl. 1/4" connection nipple for DN 8 hose  
incl. EPDM DN 8 media pressure hose, reinforced, 5 m  
incl. integrated check valves  
incl. long limit switch cap  
Gaskets: FKM  
EPDM  
FFKM  
Assembly: screwed to multiplug at the fitting  
Fittings: Ceramat® WA 150, Ceramat® WA 160

**ZU 0654**

**ZU 0654/1  
ZU 0654/2  
ZU 0654/3**

For up-to-date information, please visit [www.knick.com.br](http://www.knick.com.br)

**Knick** 

### Accessories – continued

Ceramat® mounting wrench



tool for connecting and loosening the Ceramat® drive unit

Fittings: Ceramat® WA 150, Ceramat® WA 160

Order No.

**ZU 0648**

Sensor mounting wrench  
19 mm



tool for easy installation of the sensor, wrench size 19

Fittings: Ceramat® WA 150, Ceramat® WA 160 et al.

**ZU 0647**

Bail handle



bail handle for easier handling of the fitting  
(pulling out the inner tube for sensor replacement),  
can be latched to the drive unit

Fitting: Ceramat® WA 160

**ZU 0651**

# Pneumatic Retractable Fittings

Chem

Energy

Pharm

Food

Water

## Accessories for Ceramat®

### Accessories – continued

Order No.

Standard-Media Interface

connection kit for manual operation or for operation with a DCS

**ZU 0631**

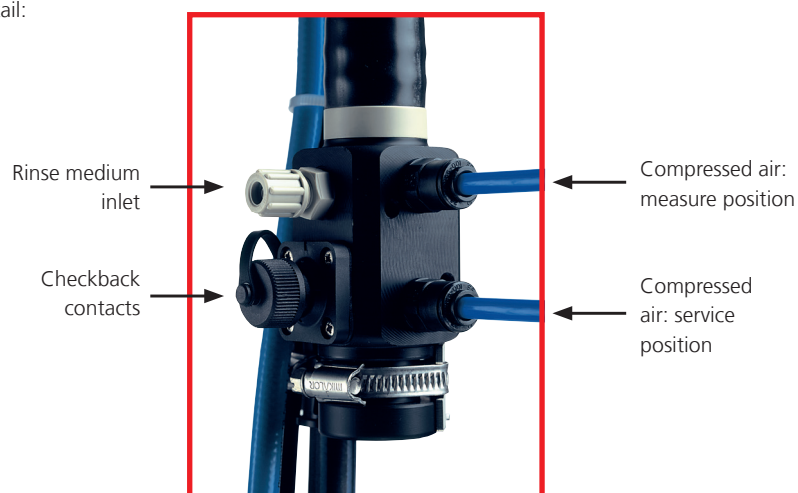
Connections: control air, movement to measure position, G 1 1/4"  
4/6 mm hose connection, pressure: 4 ... 7 bars  
control air, movement to measure position,  
4/6 mm hose connection, pressure: 4 ... 7 bars  
rinse medium, 4/6 mm hose connection:  
materials: PP, PEEK, FKM, PFA  
pressure: max. 6 bars, temperature: max. . 65 °C  
contacts for electric feedback of limit positions,  
M12 plug, rinse medium outlet, DN 8 hose,  
materials: EPDM reinforced

Fittings: Ceramat® WA 150, Ceramat® WA 160

Application:



Detail:



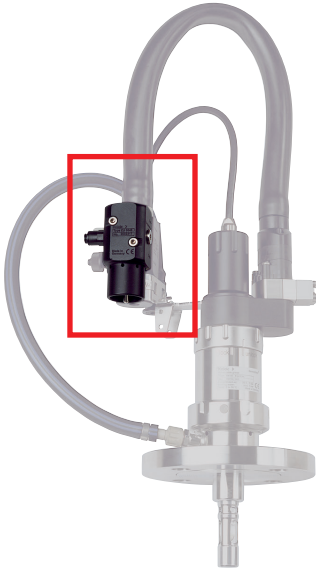
**Accessories – continued**

Pneumatically operated manual control valve

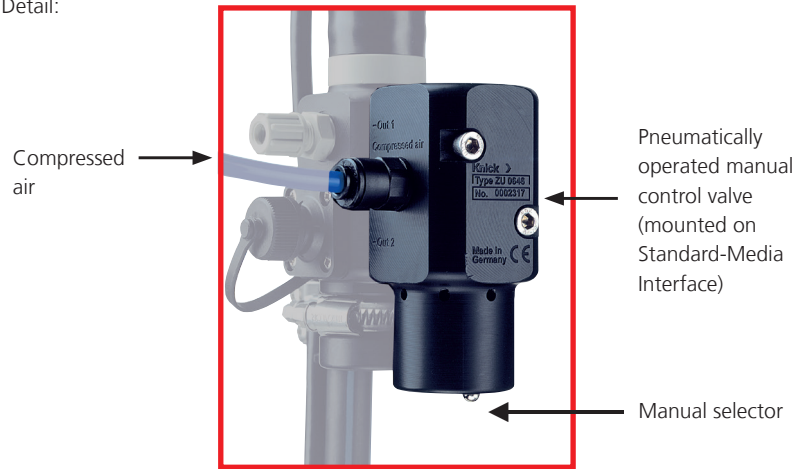
switch for operation on ZU 0631 Standard-Media Interface or displaced incl. wall and pipe fastener  
switch positions for measuring and service  
Connections: compressed air, 4/6 mm hose connection  
pressure: 4 ... 7 bars  
Fittings: Ceramat® WA 150, Ceramat® WA 160  
Application:

Order No.

**ZU 0646**



Detail:



# Pneumatic Retractable Fittings

Chem

Energy

Pharm

Food

Water

## Accessories for Ceramat®

### Accessories – continued

Order No.

Pneumatically controlled  
3/8; valve for additional  
medium

valve for introducing additional media, e.g. hot water or steam

**ZU 0669**

Material: nickel-plated brass

Gaskets: EPDM

Connections: control connection to Unical: hose, reinforced, 5 m  
connection of fitting: EPDM hose (reinforced) with  
grommet, max. 8 bars

Temperature: max. 125 °C (10 min 140 °C)

Assembly: mounting bracket (included in shipment)  
adapter for additional media required, e.g. ZU 0654/x  
or ZU 0655/x

Control via Unical® 9000/Uniclean® 900 requires  
the „Supplementary ext. valve control kit“  
(see page 312).

Fittings: Ceramat® WA 150, Ceramat® WA 160

Application:

Additional medium, input  
(hot water, steam, etc.)



Control air

To retractable fitting,  
adapter for additional medium

Air supply for pressurized  
sensors



pressure reducer with pressure gage (reverse flow ventilation  
from 0.8 bars, connection to fittings with pressurizable sensors)

Pressure regulator: ZU 0670/1 0,5 ... 4 bars  
ZU 0670/2 1 ... 7 bars

**ZU 0670/1**  
**ZU 0670/2**

Connection: prepared for connection to  
Unical® 9000/ Uniclean® 900

Hose lengths: hose incl.: side controller 3 m, side fitting 5 m  
hose, 20 m (extension for ZU 0670)

Assembly: mounting bracket (included in shipment)

**ZU 0713**

Control via Unical® 9000/Uniclean® 900 requires  
the „Supplementary ext. valve control kit“  
(see page 312).

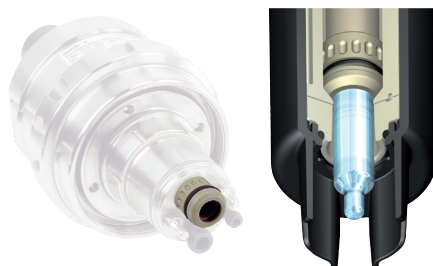
Fittings: Ceramat® WA 150, Ceramat® WA 160

For up-to-date information, please visit [www.knick.com.br](http://www.knick.com.br)

**Knick** 

## Accessories – continued

Sensor socket PEEK



spare part, sealing of sensor/calibration chamber Ceramat®

Sensor socket material: PEEK

Gasket material:

- FKM
- EPDM
- FFKM
- EPDM FDA
- FKM (with scraper ring)
- EPDM (with scraper ring)
- FFKM (with scraper ring)

Fittings:

- Ceramat® WA 150
- Ceramat® WA 160

Order No.

**ZU 0616**  
**ZU 0617**  
**ZU 0618**  
**ZU 0619**  
**ZU 0705**  
**ZU 0706**  
**ZU 0707**

Sensor socket PVDF



spare part, sealing of sensor/calibration chamber Ceramat®

Sensor socket material: PVDF

Gasket material:

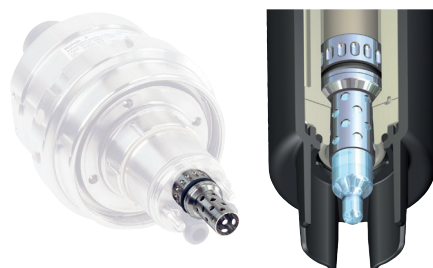
- FKM
- EPDM
- FFKM
- EPDM FDA

Fittings:

- Ceramat® WA 150
- Ceramat® WA 160

**ZU 0620**  
**ZU 0621**  
**ZU 0622**  
**ZU 0623**

Sensor socket long,  
1.4571 stainless steel



spare part, sensor socket with sensor protection, removing incrustations from the Ceramat® sensor opening during probe movement

Sensor socket material: stainless steel, 1.4571

Gasket material:

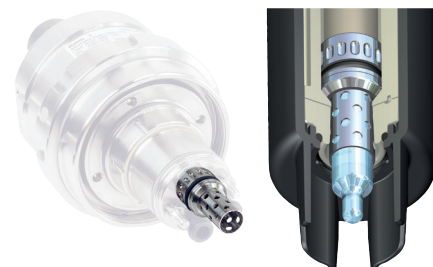
- FKM
- EPDM
- FFKM

Fittings:

- Ceramat® WA 150
- Ceramat® WA 160

**ZU 0672/A**  
**ZU 0672/B**  
**ZU 0672/C**

Sensor socket long,  
Hastelloy C22



spare part, sensor socket with sensor protection, removing incrustations from the Ceramat® sensor opening during probe movement

Sensor socket material: Hastelloy C22

Gasket material:

- FKM
- EPDM
- FFKM

Fittings:

- Ceramat® WA 150
- Ceramat® WA 160

**ZU 0673/A**  
**ZU 0673/B**  
**ZU 0673/C**

# Pneumatic Retractable Fittings

Chem

Energy

Pharm

Food

Water

## Accessories for Ceramat®

### Accessories – continued

Order No.

Sensor socket, full sensor protection, Hastelloy C22



spare part, sensor socket with sensor protection (full sensor protection), removing incrustations from the Ceramat® sensor opening during probe movement

Sensor socket material: Hastelloy C22

Gasket material: FKM  
EPDM  
FFKM

Fittings: Ceramat® WA 150  
Ceramat® WA 160

**ZU 0808/A**  
**ZU 0808/B**  
**ZU 0808/C**

Sensor socket, full sensor protection



spare part, sensor socket with sensor protection (full sensor protection), removing incrustations from the Ceramat® sensor opening during probe movement

Sensor socket material: stainless steel, 1.4571

Gasket material: FKM  
EPDM  
FFKM

Fittings: Ceramat® WA 150  
Ceramat® WA 160

**ZU 0820/A**  
**ZU 0820/B**  
**ZU 0820/C**

Flange protector DN 80



protection of process adaptation flange, DN 80, 1.4571 steel, against aggressive media

Material: PEEK  
PVDF

Thickness: 4 mm

Gasket: FKM O-ring – sheathed with PFA

Fittings: Ceramat® WA 150

**ZU 0595**  
**ZU 0596**

Flange protector DN 100



protection of process adaptation flange, DN 100, 1.4571 steel, against aggressive media

Sensor socket material: PEEK  
PVDF

Thickness: 4 mm

Gasket: FKM O-ring – sheathed with PFA

Fittings: Ceramat® WA 150

**ZU 0597**  
**ZU 0598**

For up-to-date information, please visit [www.knick.com.br](http://www.knick.com.br)

Isolation Amplifiers Transmitters	Indicators	Process Analytics	Portable Meters	Laboratory Meters	Sensors	Fittings
--------------------------------------	------------	-------------------	-----------------	-------------------	---------	----------

