

# Fittings Accessories

## Accessories for Immersion/Flow-Through/Inline Fittings

### Accessories

Safety weld-in socket, straight



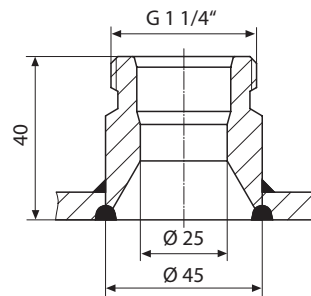
for tank wall 1.4435  
 contour-optimized for pipe DN 50 1.4435  
 contour-optimized for pipe DN 65 1.4435  
 contour-optimized for pipe DN 80 1.4435  
 contour-optimized for pipe DN 100 1.4435

Order No.

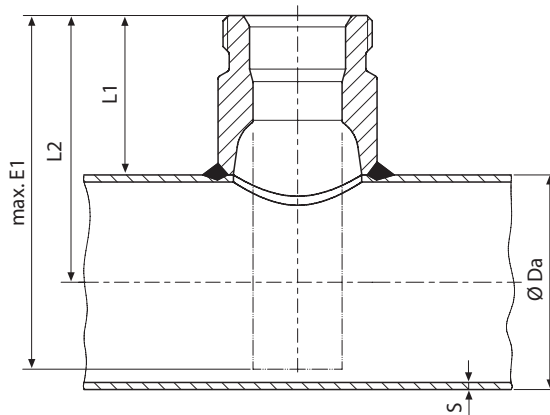
**ZU 0717**  
**ZU 0717/DN50**  
**ZU 0717/DN65**  
**ZU 0717/DN80**  
**ZU 0717/DN100**

Dimension drawing:

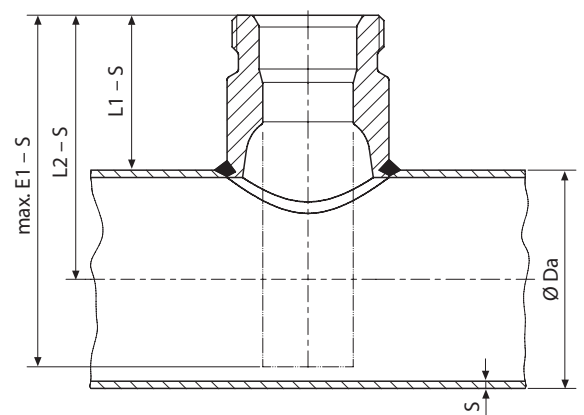
Weld-in socket, straight, fitted into the bore



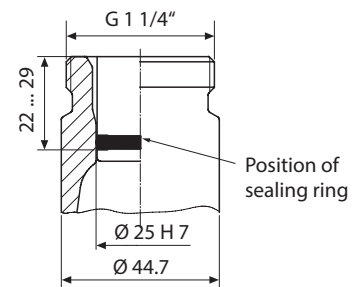
Contour-optimized weld-in socket, straight, fitted onto the bore



Contour-optimized weld-in socket, straight, fitted into the bore



	Ø Da	L1	L2	E1
<b>DN 50</b>	60.3	45	75	98
<b>DN 65</b>	76.1	40	78	109
<b>DN 80</b>	88.9	40	84.5	122
<b>DN 100</b>	114.3	40	97	148



### Specifications

Material: steel 1.4435, low delta-ferrite content  
 Thread: G 1 1/4"  
 Length: see table  
 For installation of fittings: SensoGate WA 130/131, ARI 106

**Accessories**

Safety weld-in socket,  
beveled 15°, 40 mm

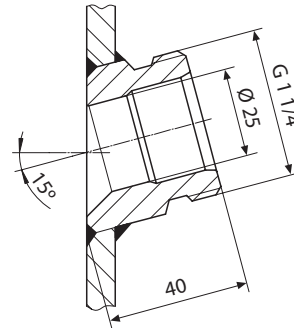


for tank wall 1.4435  
for tank wall C22  
contour-optimized for pipe DN 50 1.4435  
contour-optimized for pipe DN 65 1.4435  
contour-optimized for pipe DN 80 1.4435  
contour-optimized for pipe DN 100 1.4435

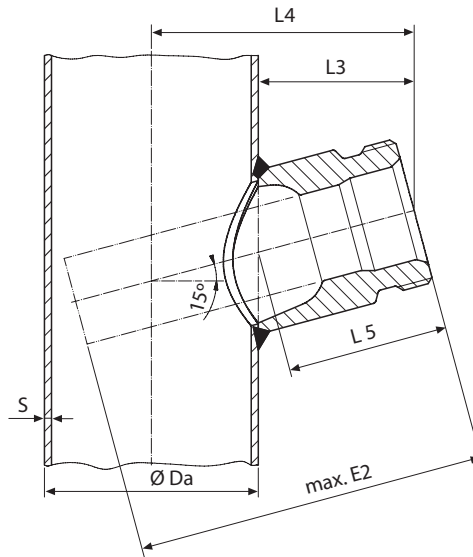
Order No.

**ZU 0718**  
**ZU 0718/C22**  
**ZU 0718/DN50**  
**ZU 0718/DN65**  
**ZU 0718/DN80**  
**ZU 0718/DN100**

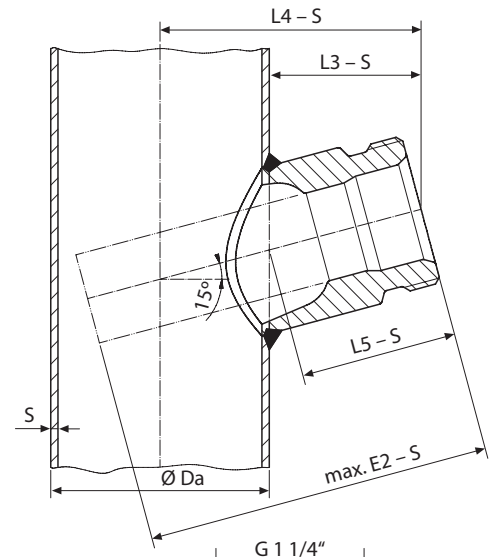
Dimension drawing:  
Weld-in socket,  
beveled 15°, fitted into the  
bore



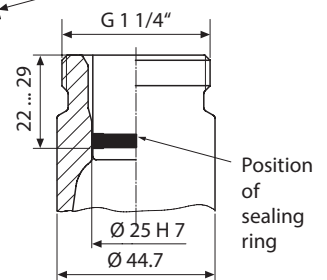
Contour-optimized weld-in sockets,  
beveled 15°, fitted onto the bore



Contour-optimized weld-in sockets,  
beveled 15°, fitted into the bore



	Ø Da	L3	L4	L5	E2
<b>DN 50</b>	60.3	44	74	45.5	97
<b>DN 65</b>	76.1	37.5	76.5	39	107
<b>DN 80</b>	88.9	37.5	82	39	120
<b>DN 100</b>	114.3	37.5	95	39	17



**Specifications**

Material:  
Thread:  
Length:  
Bevel:  
For installation of fittings:

steel 1.4435, low delta-ferrite content  
G 1 1/4"  
see table  
15°  
SensoGate WA 130/131, ARI 106