



ARF 215 Flow-Through Fitting

Highly variable flow-through fitting line made of plastic

Modular, versatile system design with different connection geometries and process connections. For measurements in main stream or bypass. Materials: PP for standard applications and PVDF for chemically demanding applications. Adapter for a broad variety of sensors for pH, ORP, temperature, contacting and noncontacting conductivity, as well as dissolved oxygen.

Protective cap with integrated electrolyte reservoir for refillable pH sensors with liquid filling. Simplified calibration for pH and conductivity due to special calibration beaker with correct consideration of fitting geometry and material.

A large flow cross-section and integrated cleaning nozzles also make it suitable for polluted media.

Applications

- PP-H: drinking water, industrial water, and cooling water
 PVDF: increased chemical resistance; for corrosive process media with 6 bars and 100 °C

Facts

- modular system adaptable to virtually every process due to different
 - sensor adapters
 - materials
 - process connections
- materials: PP-H or PVDF
- measurement in main stream or bypass
- cleaning system

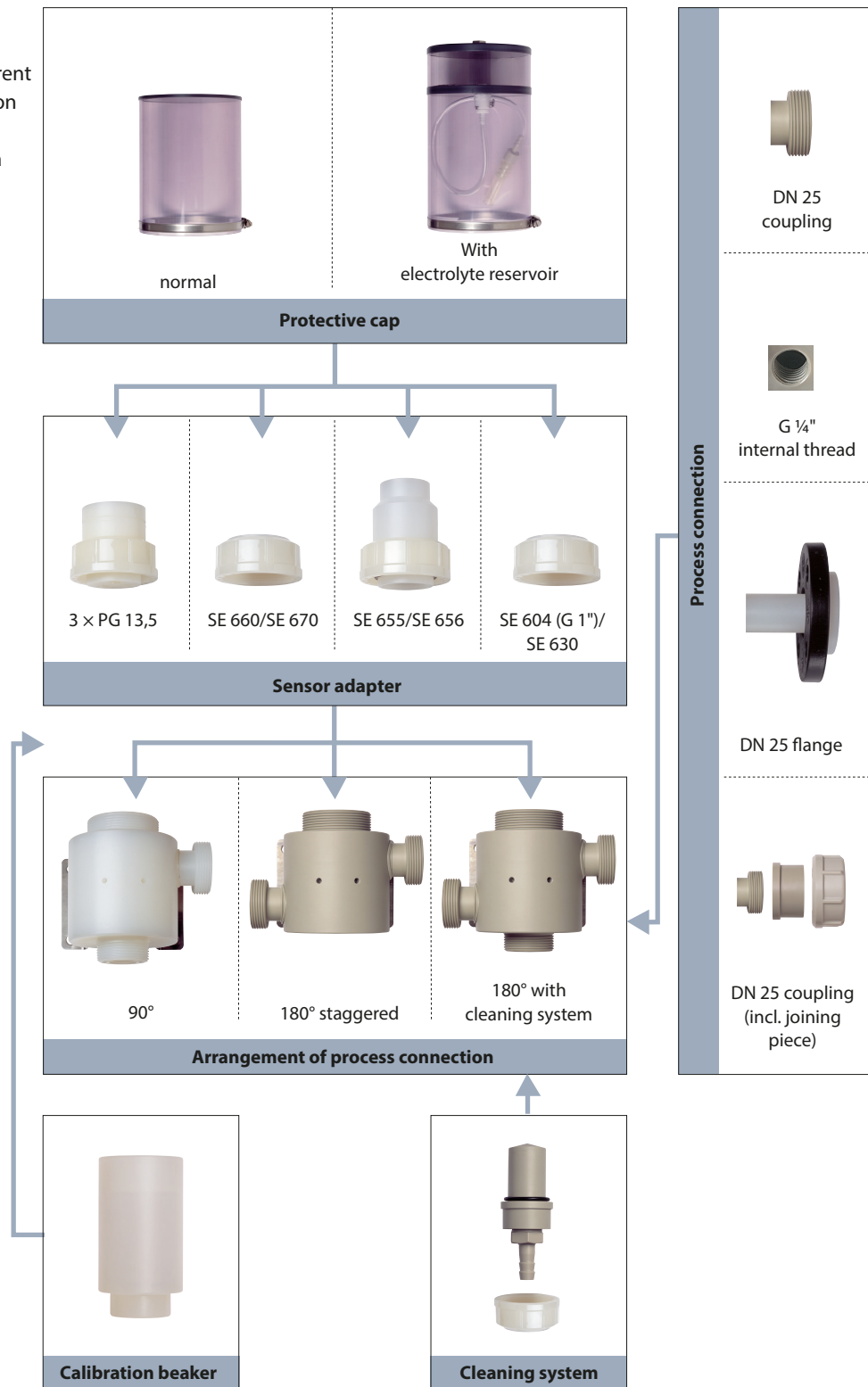
Specifications

Material:	see product line
Process connection:	see product line
Sensor adapter:	see product line
Pressure:	PP-H: 1.5 bars (90 °C), 6 bars (40 °C) PVDF: 3 bars (120 °C), 6 bars (100 °C)
Temperature:	PP-H: 0 ... 90 °C PVDF: –20 ... 120 °C

ARF 215 Flow-Through Fitting

Modular System

This flow-through fitting is available with 3 different process connections. Different protective caps, a calibration beaker, sensor adapters, process connections, and a cleaning system complete this modular system.

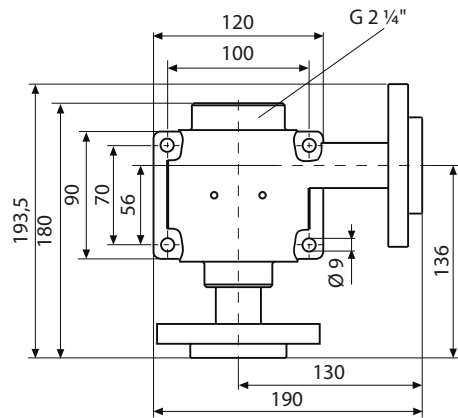
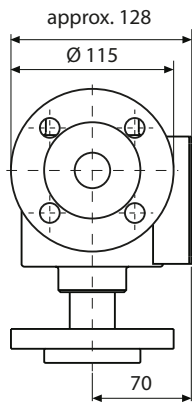


Product Line

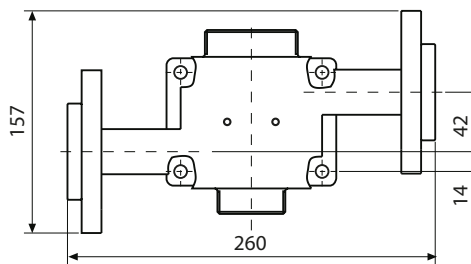
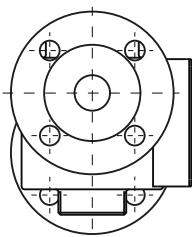
		ARF 215 /							
Material	PP-H	1							
	PVDF	2							
Sensor adapter	3 x PG 13.5	1							
	SE 660	3							
	SE 655(X) / SE 656(X)	4							
	SE 604 (G1), SE 605 (G1), SE 630 (G1)	7							
	SE 557 (liquid-filled, pressurizable sensor)	8				0			
	SE 670	E							
	SE 680	X							
Process connection and arrangement	Threaded coupling, DN 25, 90°			1	1				
	Threaded coupling, DN 25, 180° staggered			1	2				
	Threaded coupling, DN 25, 180°, cleaning connection	1		1	3				
	G ¼, 90°			2	1				
	G ¼, 180° staggered			2	2				
	G ¼, 180°, cleaning connection	1		2	3				
	Flange, DN 25, 90°			3	1				
	Flange, DN 25, 180° staggered			3	2				
	Flange, DN 25, 180°, cleaning connection	1		3	3				
	Threaded coupling, DN 25 (incl. joining pieces), 90°			5	1				
	Threaded coupling, DN 25 (incl. joining pieces), 180° staggered			5	2				
	Threaded coupling, DN 25 (incl. joining pieces), 180°, cleaning connection	1		5	3				
	Flange, ANSI 1" B16.5, 90°			A	1				
	Flange, ANSI 1" B16.5, 180° staggered			A	2				
	Flange, ANSI 1" B16.5, 180°, with cleaning connection	1		A	3				
Protective cap	Without					0			
	Normal		1/4			1			
	With electrolyte reservoir		1			2			
Calibration beaker	Without						0		
	With						1		
Gasket material	EPDM								1
	FKM								2
	FFKM								3

ARF 215 Flow-Through Fitting

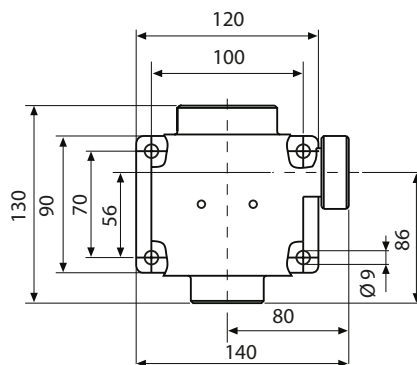
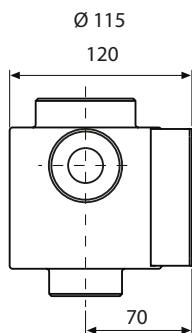
Dimension Drawings



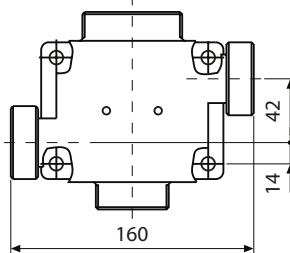
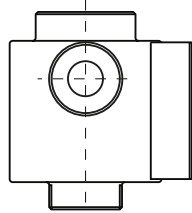
DN 25 flange, 90°



DN 25 flange,
180° staggered with connection
for cleaning system



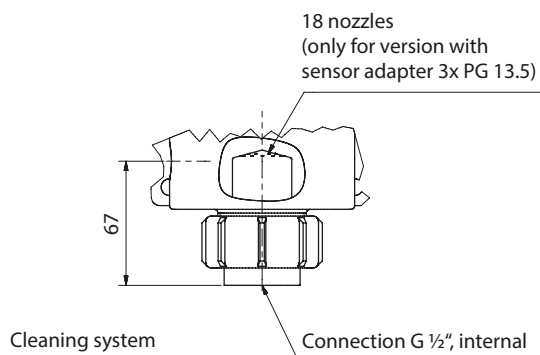
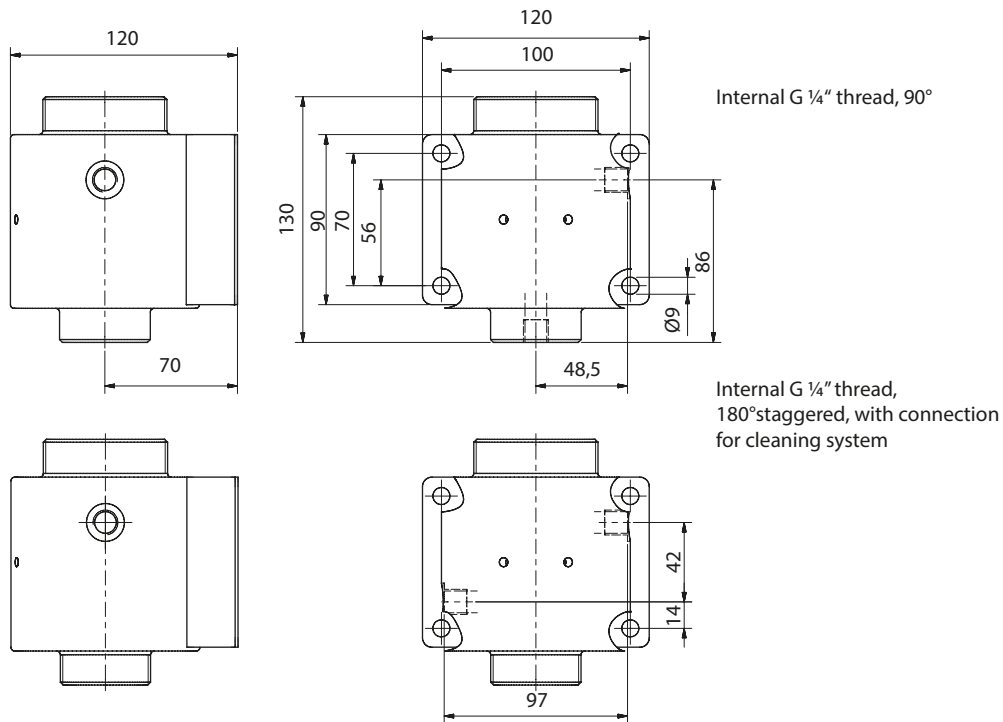
DN 25 coupling, 90°



DN 25 coupling, 180°
staggered with connection
for cleaning system

All dimensions in cm

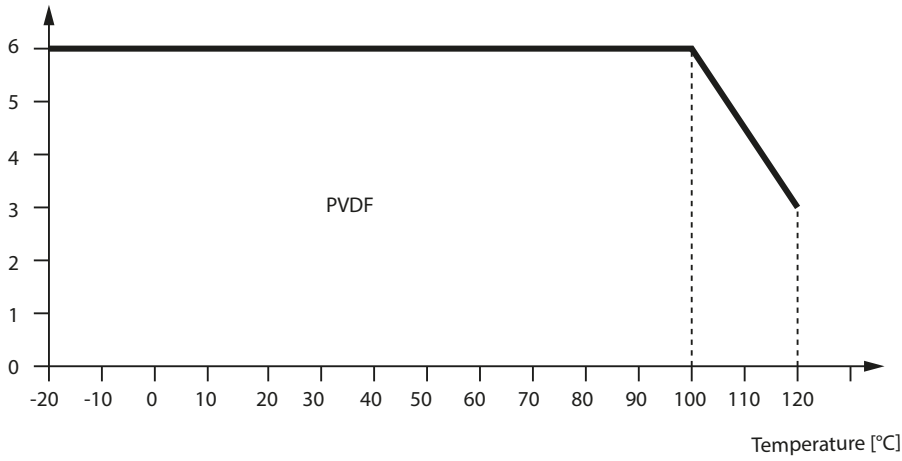
Dimension Drawings – continued



ARF 215 Flow-Through Fitting

Pressure/Temperature Diagrams

Pressure [bar]



Pressure [bar]

