

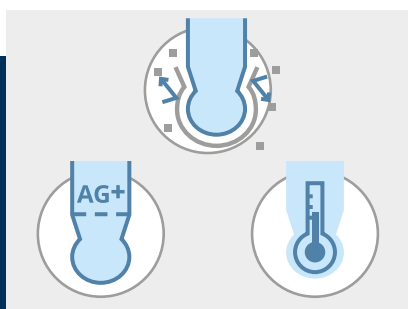
SE571

Low-Maintenance pH Sensor for Demanding Process Applications in the Chemical Industry and Paint Shops



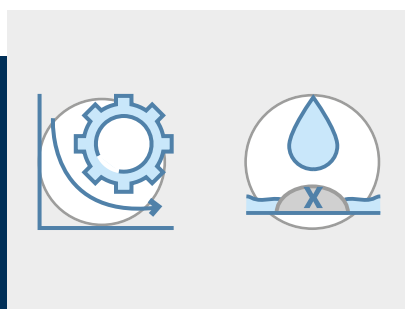
Measurements at extreme ionic strengths, such as in brine and highly oxidizing, acidic or alkaline media

The special design allows for pH measurements in challenging contaminated media, even under high pressures. The reference system is in contact with the measured medium via a PTFE ring junction, which minimizes the risk of blockages. A special discharge cartridge with a silver ion trap prevents the reference system from being poisoned. A salt reservoir protects against leaching. The sensor with the advanced Memosens II technology by Knick is designed for higher ambient temperatures.



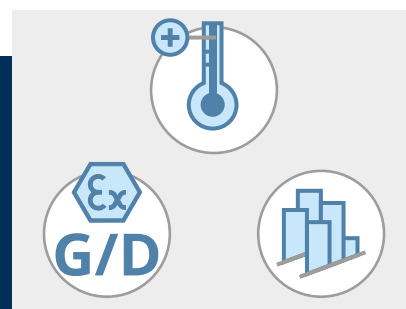
Reliable measurement technology

- PTFE ring junction, no blockage
- Silver ion trap and salt reservoir
- Integrated temperature detector



Design and material

- Low maintenance, no electrolyte refilling
- Available version: free of paint-wetting impairment substances (PWIS-free)



Memosens II by Knick

- Ambient temperature up to 100 °C
- Ex approval for gas and dust
- Diagnostics with load matrix and statistics on transmitters with graphical display

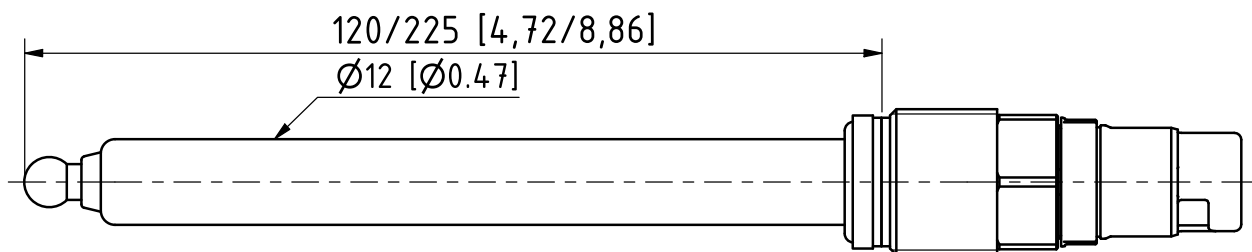
Specifications (Excerpt)

Excerpt from the user manual. Detailed information → knick-international.com

Measuring range	
pH	0 ... 14
Process temperature	-5 ... 130 °C (23 ... 266 °F)
Process Pressure	0 ... 12 bar (0 ... 174 psi)
Temperature detector	NTC 30 kΩ
Wetted materials	
Body	Glass
Junction	PTFE ring
Electrolyte	Gel with KCl supply rings
Sensor tip	Alpha glass
Reference system	Ag/AgCl with silver ion trap
Process connection	PG 13.5
Tightening torque	1 ... 3 Nm
Electrical connection	Memosens connector
Dimensions	See the dimension drawing

Dimension Drawing

Note: All dimensions are listed in millimeters [inches].



Knick
Elektronische Messgeräte
GmbH & Co. KG

Beuckestraße 22, 14163 Berlin
 Germany
 Phone: +49 30 80191-0
 Fax: +49 30 80191-200
info@knick.de • www.knick-international.com

Subject to change.